

ScanearImagens

no

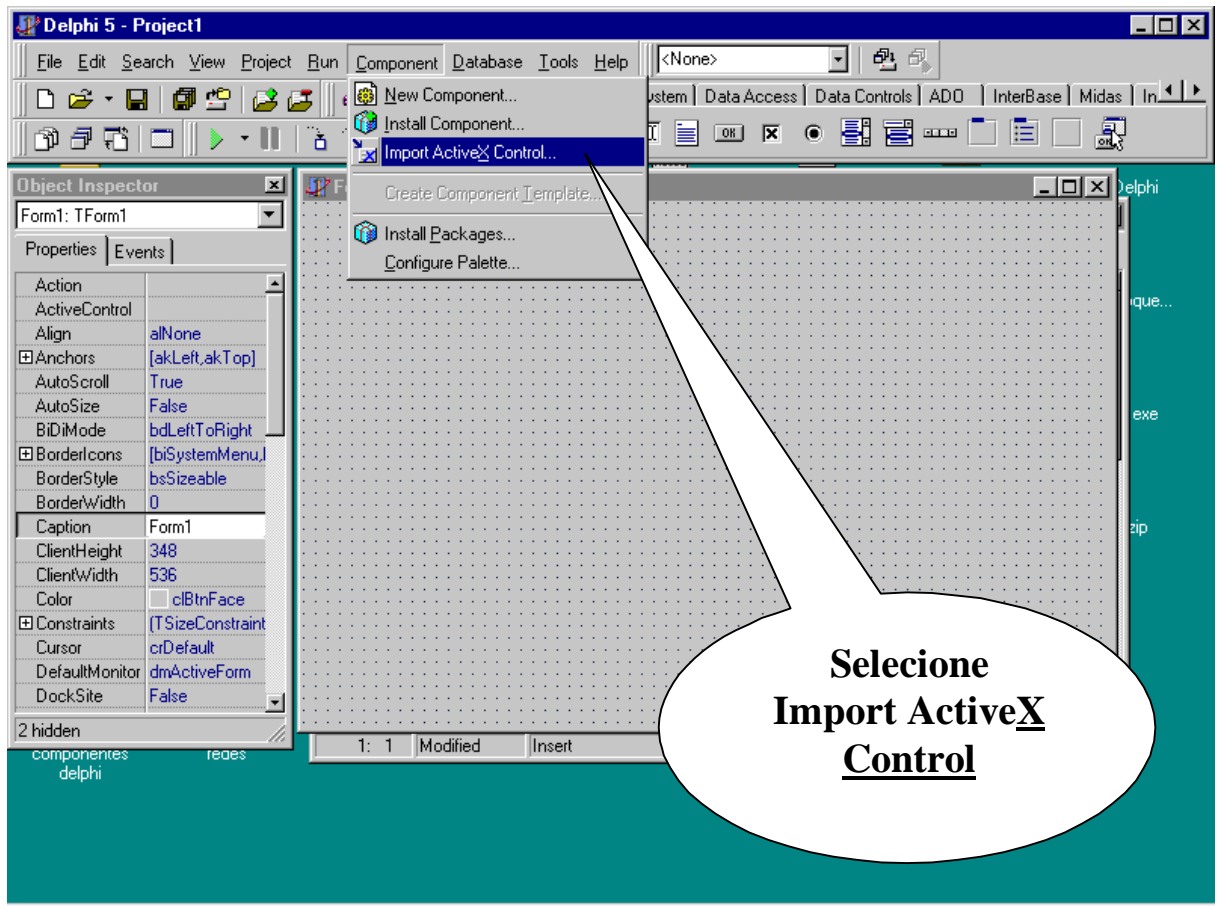
Delphi

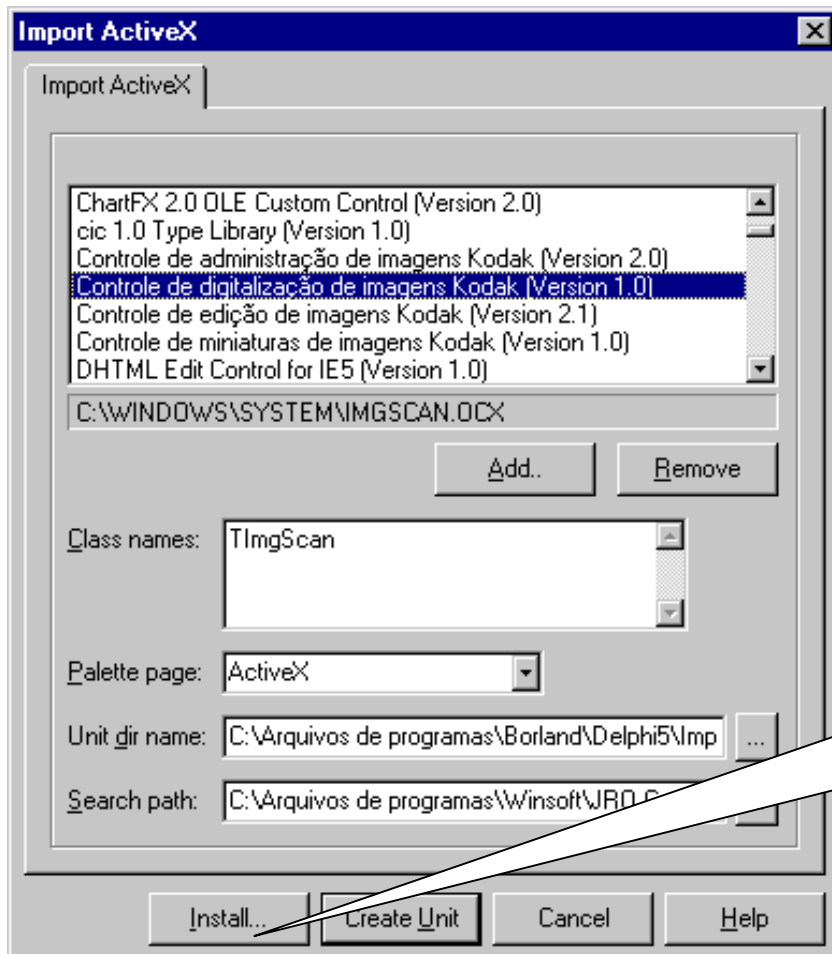
Hercules Alex Borges
Hercules Alex Borges

halex@pop.com.br

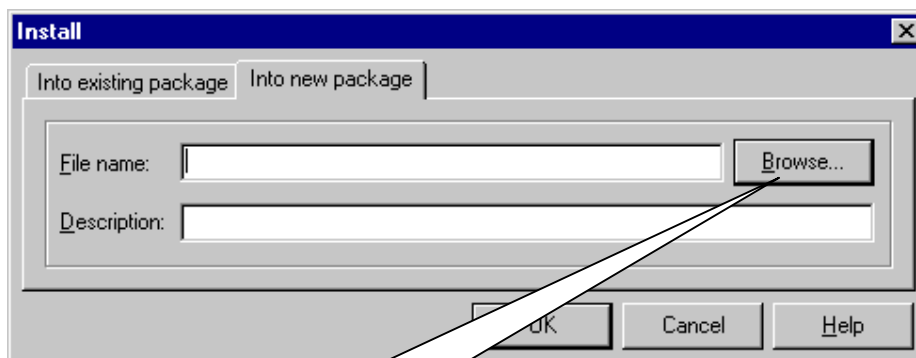
Foz do Iguaçu-Pr/2003

Siga a sequência das telas e faça você mesmo na prática.

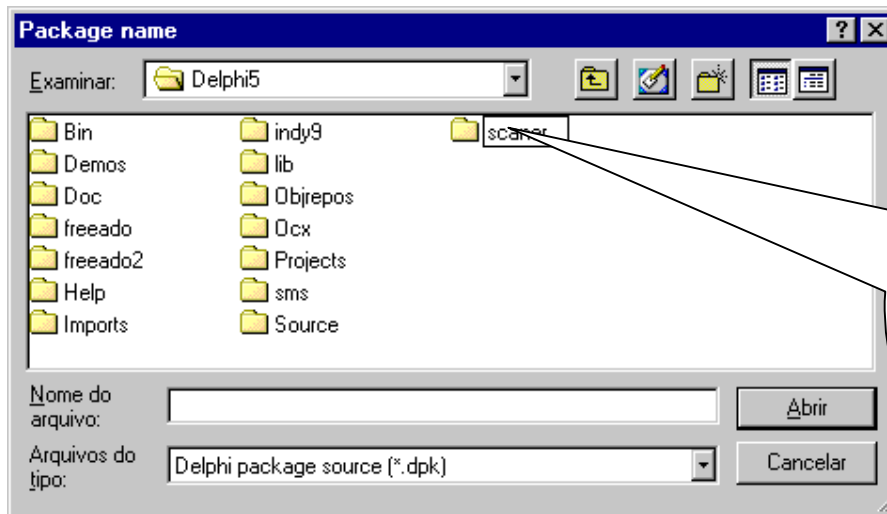




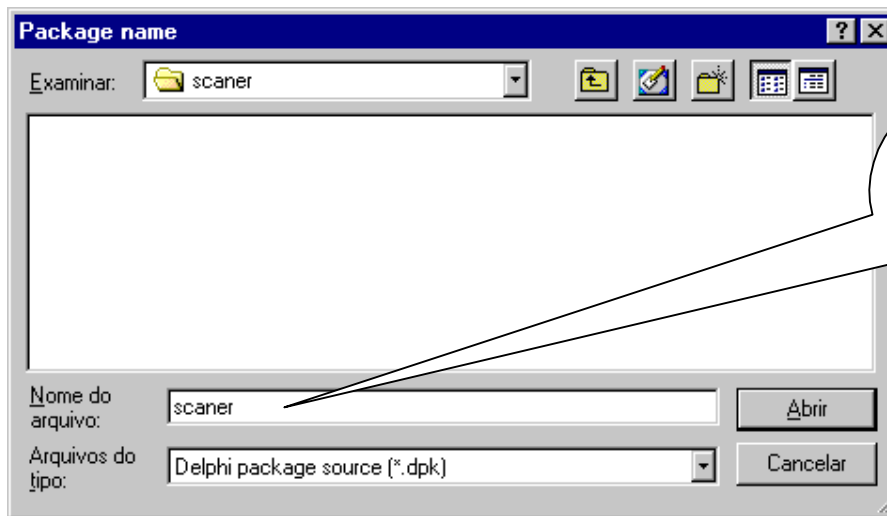
**Pressione
Install...**



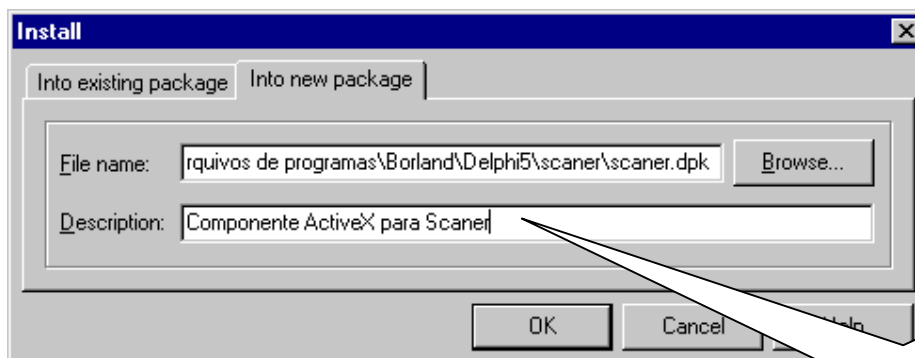
**Pressione
Browse...**



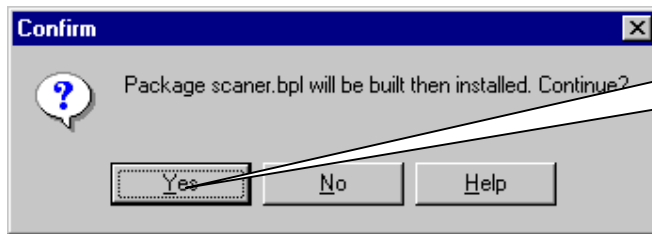
Crie uma pasta no Diretório do Delphi chamada scanner



Dê o nome de scanner



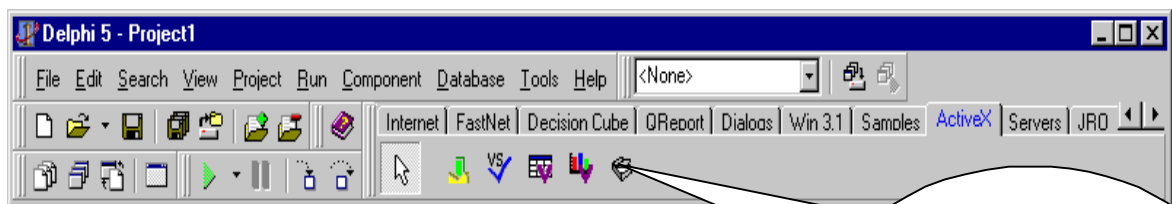
Descreva o Componente e Pressione OK



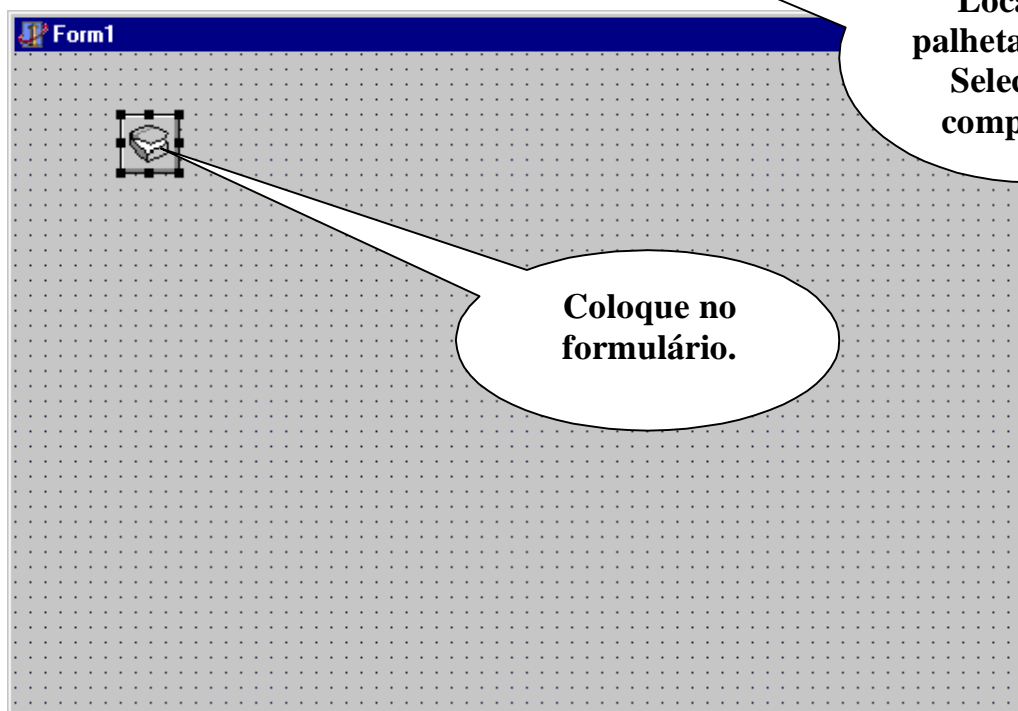
**Pressione
Yes**



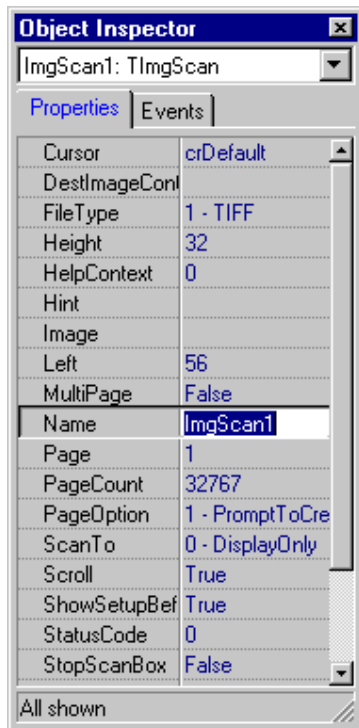
**Pressione
Ok**



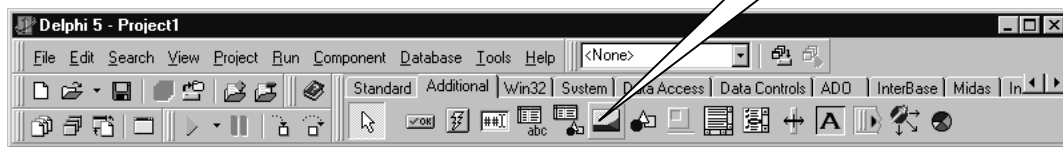
**Localize a
palheta ActiveX
Selecione o
componente**



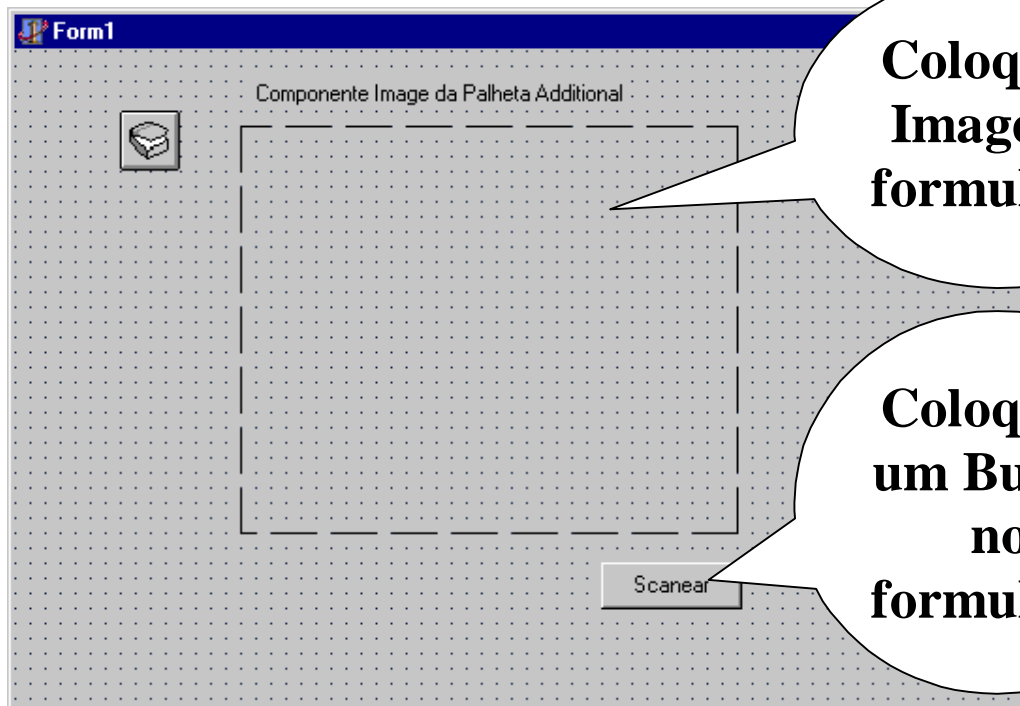
**Coloque no
formulário.**



**Selecione
um Image**



**Coloque o
Image no
formulário**



**Coloque o
um Button
no
formulário**

